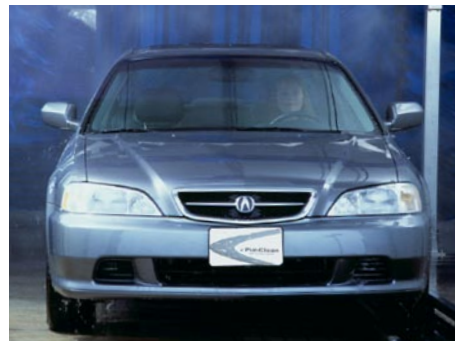


PurWater Features

- *Compact skid design – Requires minimal footprint*
- *Dramatically reduces water & sewer cost*
- *Totally automatic operation – through a PLC and variable frequency pump*
- *Patent pending Succession Technology – consistently provides engineered certified 5 micron quality wash water*
- *Totally physical process eliminates expensive disposable filters*
- *Eliminates odor typically associated with water recovery*
- *Self-priming pump can easily be connected to underground tanks*
- *Pre-wired / pre-plumbed for easy installation*
- *Minimal maintenance required*
- *ETL Listed*



**PurWater 2005 M120
Water Recovery System**



BACK: SUPPORTING PRODUCTS, SYSTEM DIAGRAM, AND ADDITIONAL SPECIFICATIONS

ALSO INQUIRE ABOUT OUR PURCLEAN SPOT-FREE RINSE SYSTEMS

QUALITY WATER

IS THE

ESSENTIAL INGREDIENT

TO DELIVERING

THE PERFECT

VEHICLE WASH.

WWW.PURCLEAN.COM

CORPORATE

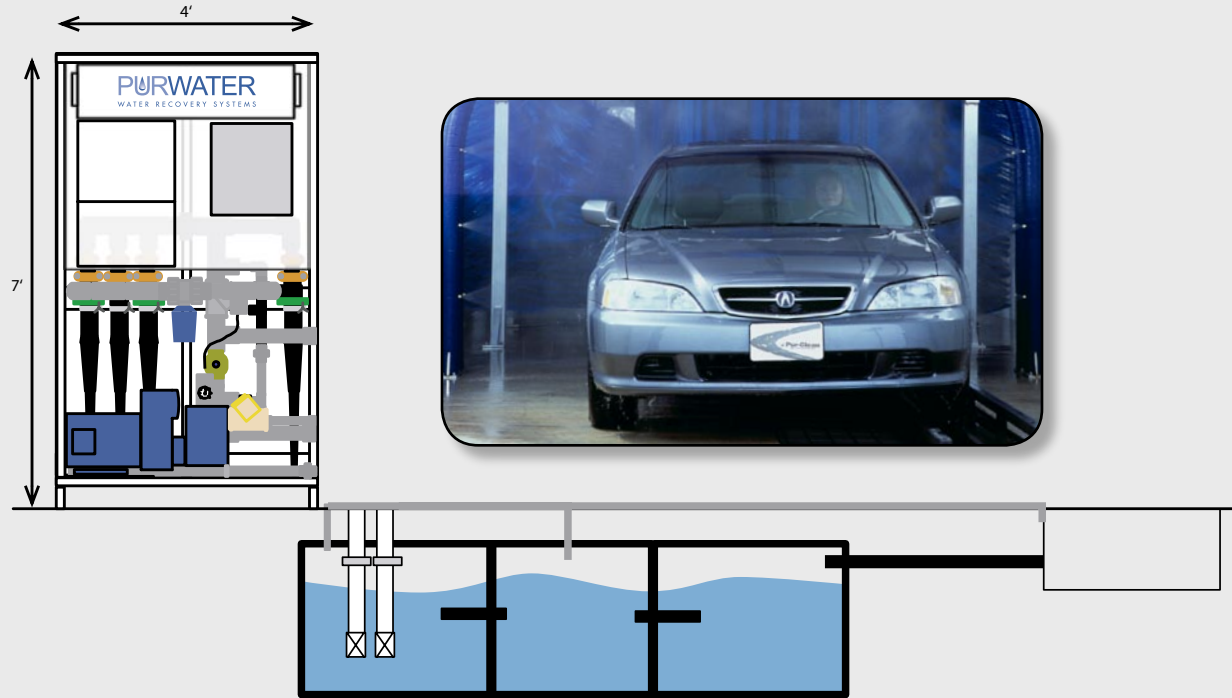
3315 Orange Grove Avenue
North Highlands, CA 95660
800.882.8854

MARKETING

2706 Alternate U.S. 19 North
Palm Harbor, FL 34683
800.818.8868

NEWWAVE
INDUSTRIES

**TECHNICAL
SITE LAYOUT**



PurWater Systems – Extremely Versatile to Meet Your Specific Needs



**PurWater 100 FS5
Water Recovery System**

- PurWater-FS Series designed specifically for Auto Dealer and Fleet Wash applications
- Consistently provides high quality wash water on demand and address odor control with patent pending Air Sparger™ technology



**PurWater 2005 M120
Water Recovery System**

- PurWater-ProSeries Recovery systems consistently provides 5Micron quality wash water on demand
- Patent pending Succession Technology™ Self-Purging Filtration process is totally automatic and eliminates the need of expensive disposable filters



**PurWater 3005MAS
Water Recovery System**

- Consistent 5Micron wash water quality prolongs 0 degree nozzle life and meets the strict warranty requirements set forth by major industry pump manufacturer's
- Provides 24/7 filtration and odor control
- Requires minimal footprint/ETL Approved